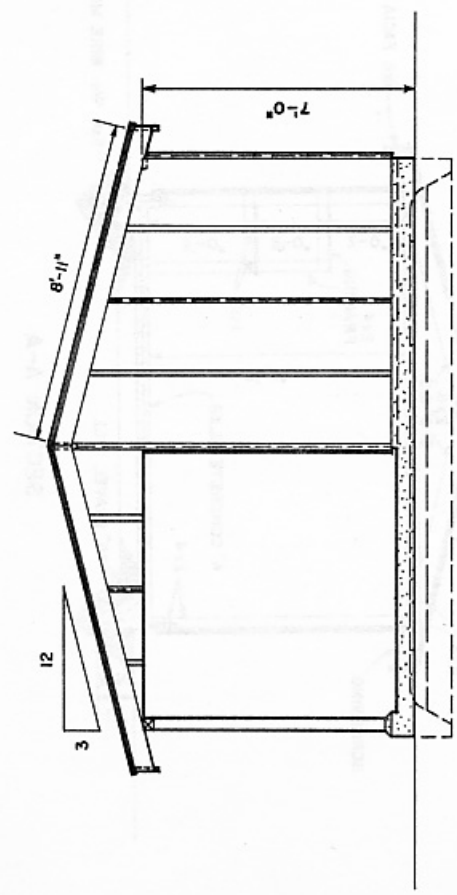
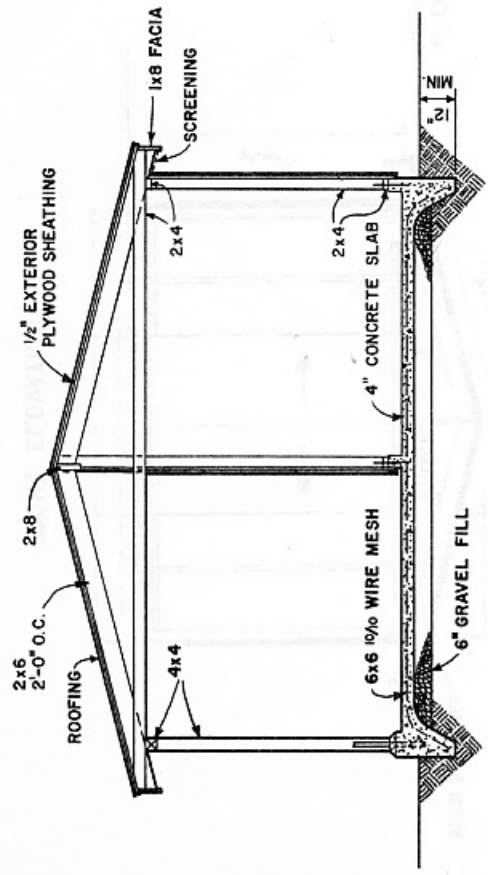


PLAN

TYPE I



SIDE ELEVATION



SECTION A-A

NOTE: ALL 4x4 POSTS TO BE FASTENED WITH 3/8" x 1 1/2" STEEL U-STRAP ANCHORS CAST INTO CONCRETE 12" ENDS TO EXTEND 12" ON SIDES OF POST. FASTEN WITH TWO 3/8" x 2 1/2" LAG SCREWS, STAGGERED, EACH SIDE. FOR OPENINGS UP TO 4'-0" USE TWO 2x4'S FOR OPENINGS UP TO 5'-6" USE TWO 2x6'S

COOPERATIVE EXTENSION WORK IN
 AGRICULTURE AND HOME ECONOMICS
 STATE OF TENNESSEE
 UNIVERSITY OF TENNESSEE
 UNITED STATES DEPARTMENT OF AGRICULTURE COOPERATING

STORAGE SHEDS

S.C. '69 6086 SHEET 1 OF 3

BASED ON: CLEMSON UNIV. S.C. PLAN 350

