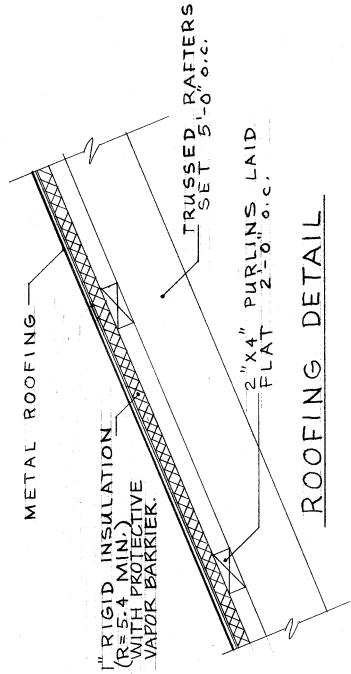
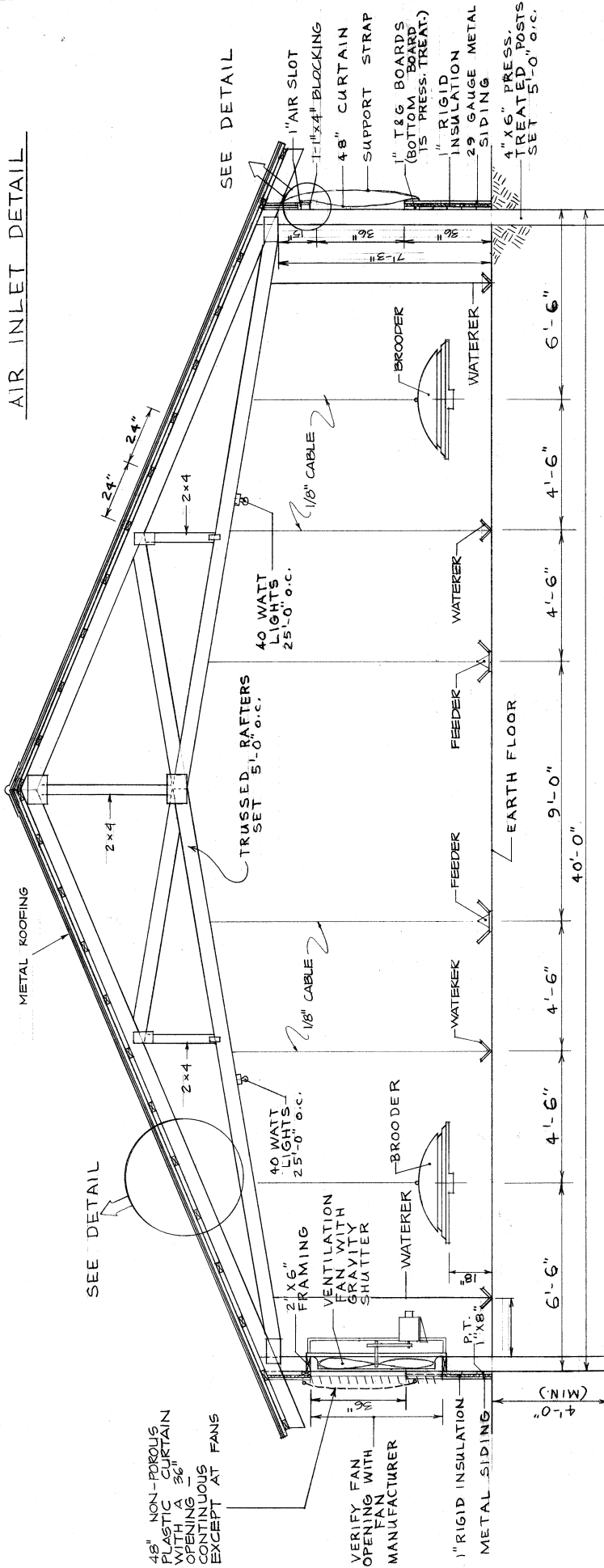


AIR INLET DETAIL



ROOFING DETAIL



CROSS SECTION

NOTE ON FANS:  
 THE TOTAL SUGGESTED FAN CAPACITY FOR THIS STRUCTURE IS APPROXIMATELY 68,000 CU. FT. PER MIN. ALTHOUGH THIS PLAN SHOWS FOUR 48" FANS SIX 36" FANS COULD BE SUBSTITUTED. FAN CAPACITIES SHOULD BE AMCA CAPARATED AT 1/8" STATIC PRESS.

COOPERATIVE EXTENSION WORK IN AGRICULTURE AND HOME ECONOMICS  
 STATE OF TENNESSEE  
 UNIVERSITY OF TENNESSEE  
 AGRICULTURAL ENGINEERING DEPARTMENT  
 UNITED STATES DEPARTMENT OF AGRICULTURE COOPERATING

40' BROILER HOUSE WITH WOOD TRUSS

TENN 7-3-79 SHEET 2 OF 2  
 G.F.G. PLAN NO. T4055

(PRELIMINARY DRAFT)  
 REVISION 30 APRIL 81